

Rochester Gauges International



Rochester Gauges International

Avenue Lavoisier 6 - B-1300 Wavre - Belgium

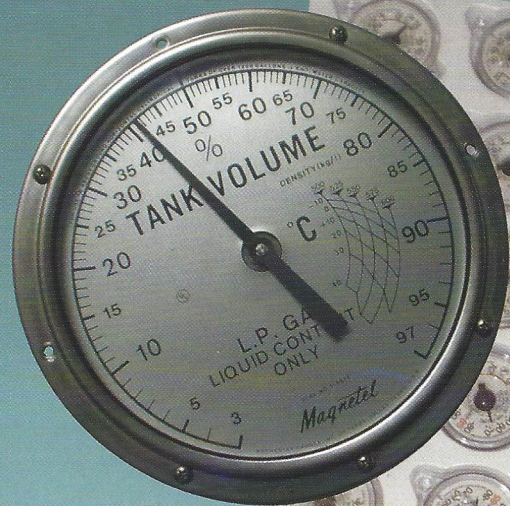
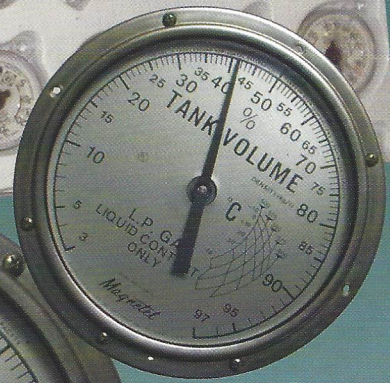
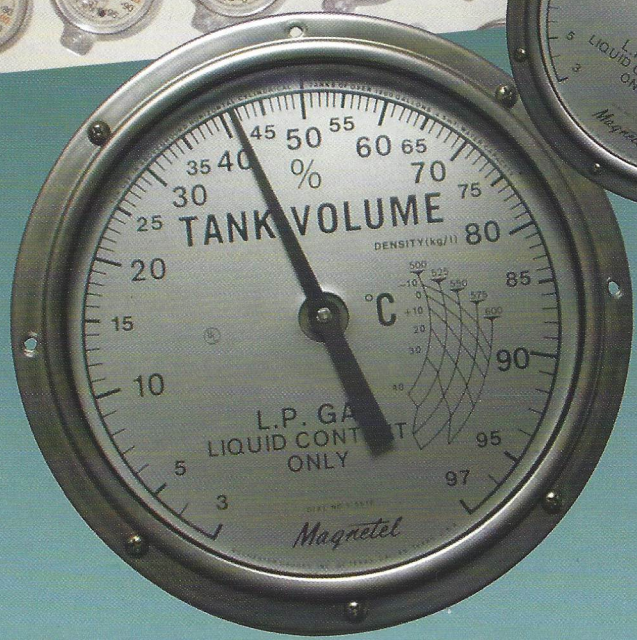
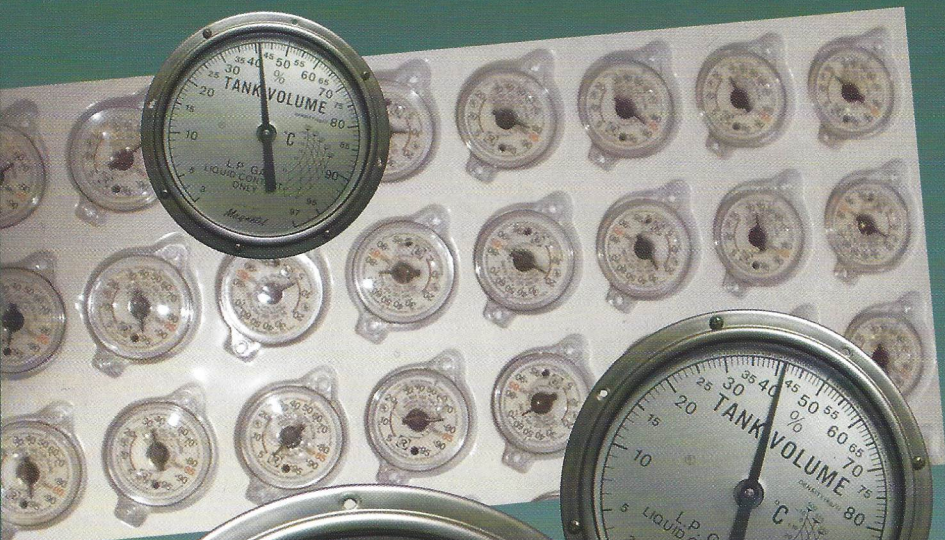
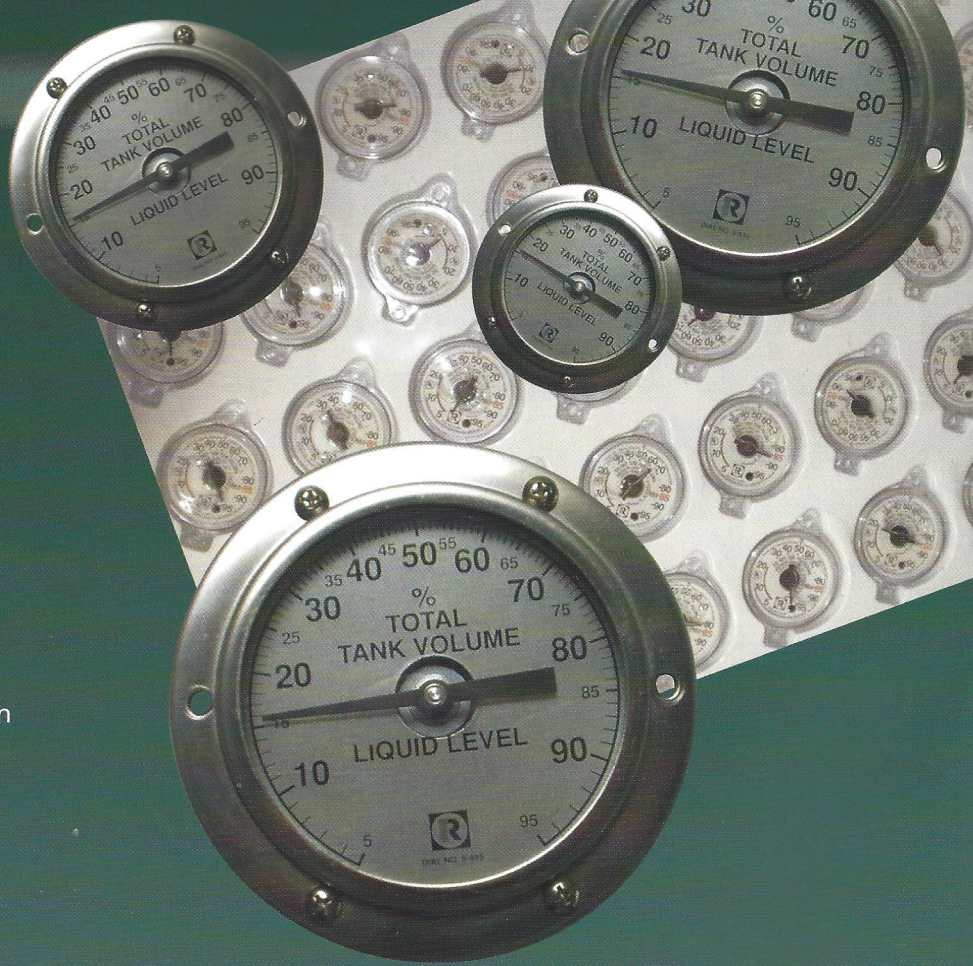
Tel.: +32 10 241010 - Fax: +32 10 228139 - Web site: www.rochester-gauges.be



Since 1958 Rochester Gauges Inc. in Dallas (Texas) has developed magnetic level indicators, level sensors, pressure and temperature indicators and thermometers.

In 1967 both Rochester Gauges International (Belgium) and Medidores Internacionales Rochester de C.V. (Mexico) started in business in order to meet the requirements of the European and South American markets.

Rochester Group, with its three production units, all of them ISO 9001 certified, is able to face the specific needs of the different markets. Rochester products are sold all over the world thanks to its distribution and representatives network active on the five continents.



Rochester equipments are used at present in numerous industrial applications and other ones such as:

- Chemistry and Petrochemical Industry
- Refrigeration (Ammonia, Refrigerant fluids, etc.)
- Liquefied Petroleum Gases (Butane, Propane, LPG)
- Other liquefied gases (CO₂, SO₂, etc.)
- Compression units and compressors
- Tractors and Agricultural machines
- Railway vehicles
- Construction machineries
- Lubrication and Hydraulic Oils
- Tank trucks and Semi-trailers
- Containers
- Fuel tanks
- Ships, caravans, recreation vehicles



MAGNETIC COUPLING

The Rochester magnetic liquid level gauge operates simply by means of a float actuating a powerful magnet inside the container underneath the gauge's head. This magnet actuates the dial's needle magnet to indicate the tank liquid content. The dial may be removed and replaced quickly anytime without loss of liquid, pressure, vacuum or costly downtime.

APPLICATION

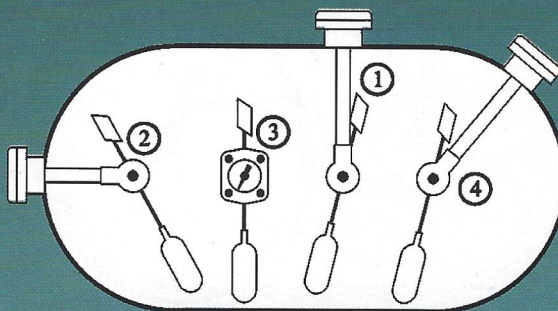
Rochester magnetic float level gauges are used to indicate the level of liquid in containers or tanks from 100 mm up to 5000 mm diameter in stationary or mobile applications.

Liquid currently gauged: fuel, diesel fuel, gasoline, hydraulic oil, lubricating oil, water, chemicals, refrigerants, liquified gases such as propane, butane, ammonia, Freon, carbon dioxide, sulphur dioxide etc. Rochester magnetic float level gauges are currently used on compressors, generators, agricultural and construction machinery, boats, IBC containers, domestic tanks, cylinders, storage tanks, trucks and trailers.

TYPE OF GAUGES AND MOUNTING POSITIONS

Geared type: gauges are made with Stainless Steel gears which allow any mounting position such as top, bottom, side, end or angle.

Lever type: gauges are intended for horizontal mounting (end or side).



Vertical (1) Horizontal (2) and (3) Angle (4)

Spiral type: gauges are used in narrow tanks where the space does not allow the use of a float arm, vertical mounting (top).

CHOICE OF MATERIALS

Depending on the application, Rochester gauges offers a wide range of materials such as Aluminium, Brass, Stainless Steel, Plastics. Float can be supplied in Aluminium, Stainless Steel, Nitril rubber, Plastic. Head can be supplied in Aluminium, Stainless Steel, Brass, Zinc or Plastic.

CHOICE OF HEAD SIZE AND TANK CONNECTION

Depending on the model and the application, heads for pressure up to 40 bar can be supplied. The tank connection can be flanged (Junior, Senior or Magnetel) or threaded 3/4" NPT, 1" NPT, 1-1/4" NPT, 1-1/2" NPT. Rochester can also supply a range of welding or threaded adapters.

CHOICE OF DIALS

Depending on the model, Rochester gauges can be supplied with dials of 40 mm, 50 mm, 100 mm, 200 mm diameter or side reading dial. Dials with variable resistance, Hall effect sensor or explosion proof transmitter can also be supplied for most of the Rochester gauges in order to supply an electrical signal and direct reading on the tank.

REMOTE

Remote indication systems including level set points and communication output (RS or modem) can be supplied.

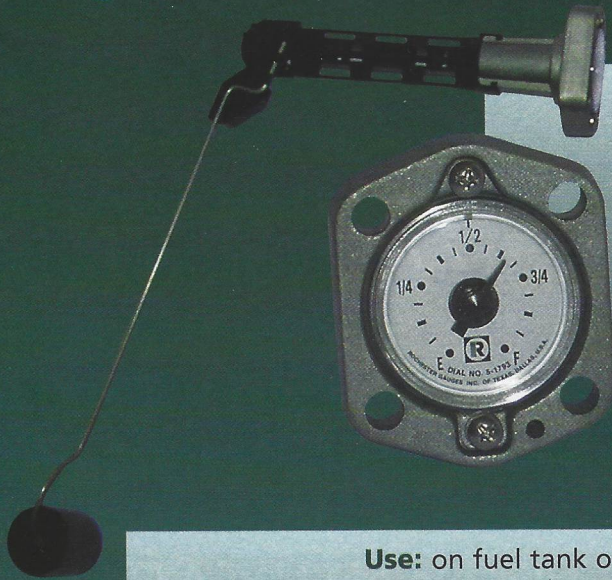
FUEL SENDERS

Rochester fuel senders are used extensively on fuel tanks of tractors, heavy trucks, off road vehicles, construction machineries, generators and boats.

Those fuel senders can be offered in Aluminium or Stainless Steel construction. Special features such as pass through connector or tubes in head for fuel suction and/or return, can be provided.



MAGNETIC FLOAT GAUGES



Use: fuels, hydraulic oil, lubricating oil on compressors, generating sets, light vehicles, liquefied gases such as refrigerants, butane, propane, ammonia

Pressure: up to 25 bar

Materials: Aluminium, Brass, Plastic, Nitrile rubber

Type: geared or lever

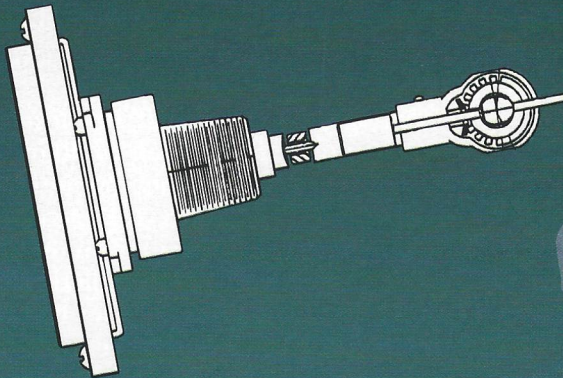
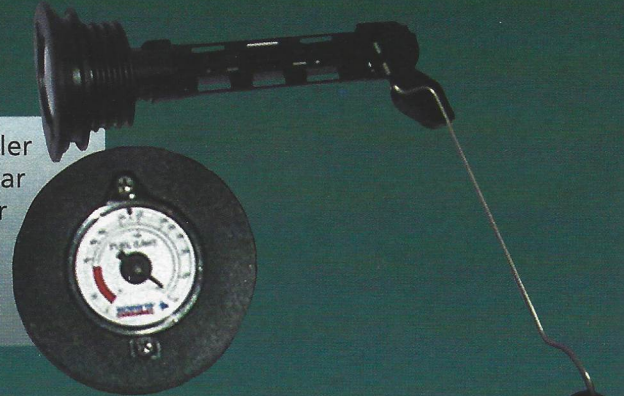
Dial: 40, 50 or 100 mm

Mounting: flange and (4) screws

6200

Use: on fuel tank of refrigerated semi-trailer
Pressure: up to 0,7 bar
Materials: Plastic, Aluminium, Nitrile rubber
Type: geared for horizontal mounting
Dial: 40 mm
Mounting: flange or threaded head

P6284

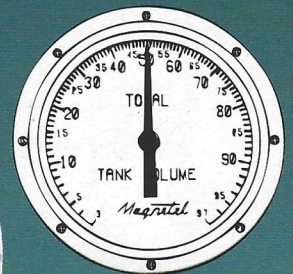
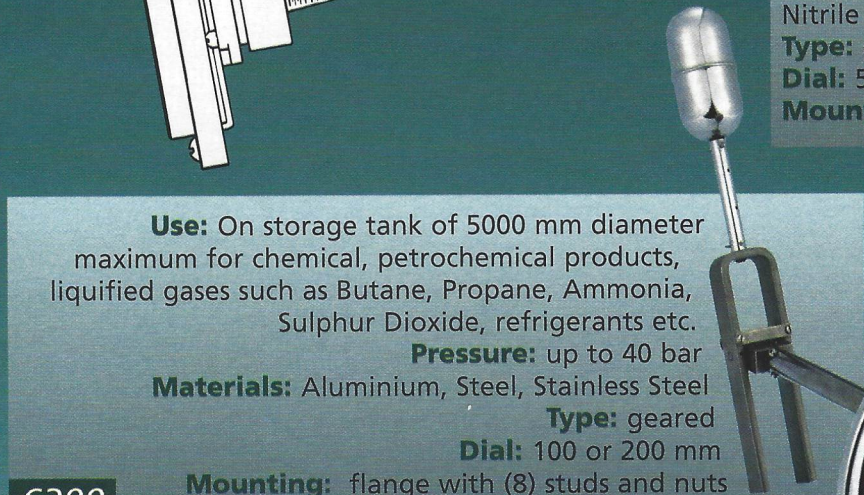


Use: replacement of Rotogauge™ on propane or ammonia tanks of 2200 mm diameter maximum
Pressure: up to 25 bar
Materials: Aluminium, Plastic, Stainless Steel, Nitrile rubber
Type: geared for horizontal mounting
Dial: 50 or 100 mm
Mounting: 1" NPT

P6293

Use: On storage tank of 5000 mm diameter maximum for chemical, petrochemical products, liquified gases such as Butane, Propane, Ammonia, Sulphur Dioxide, refrigerants etc.
Pressure: up to 40 bar
Materials: Aluminium, Steel, Stainless Steel
Type: geared
Dial: 100 or 200 mm
Mounting: flange with (8) studs and nuts

6300



Use: On trucks or semi-trailers with tanks of chemical, petrochemical products, liquified gases such as Butane, Propane, Ammonia, refrigerants etc.

Pressure: up to 40 bar

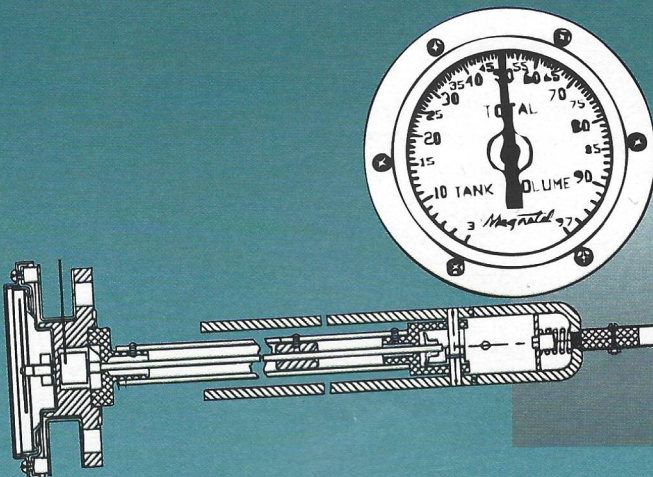
Materials: Steel, Stainless Steel

Type: geared

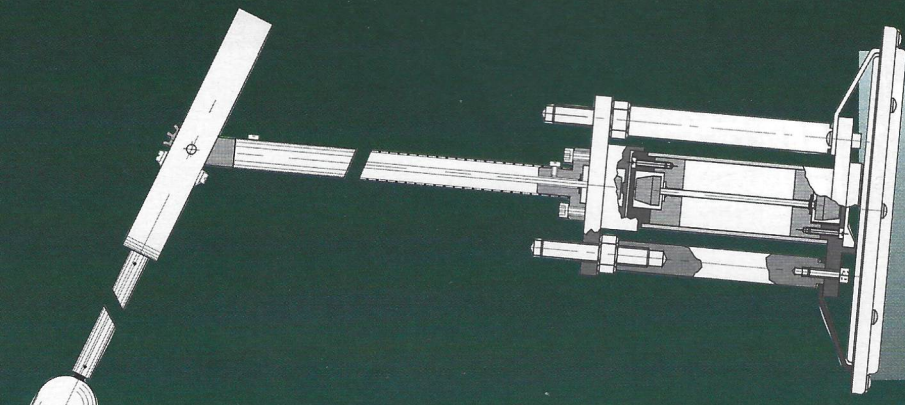
Dial: 100 or 200 mm

Mounting: flange with (8) studs and nuts

M6300

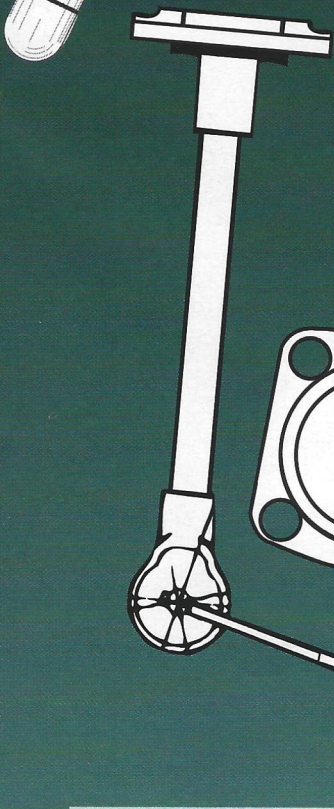


MAGNETIC FLOAT GAUGES



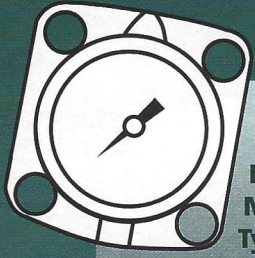
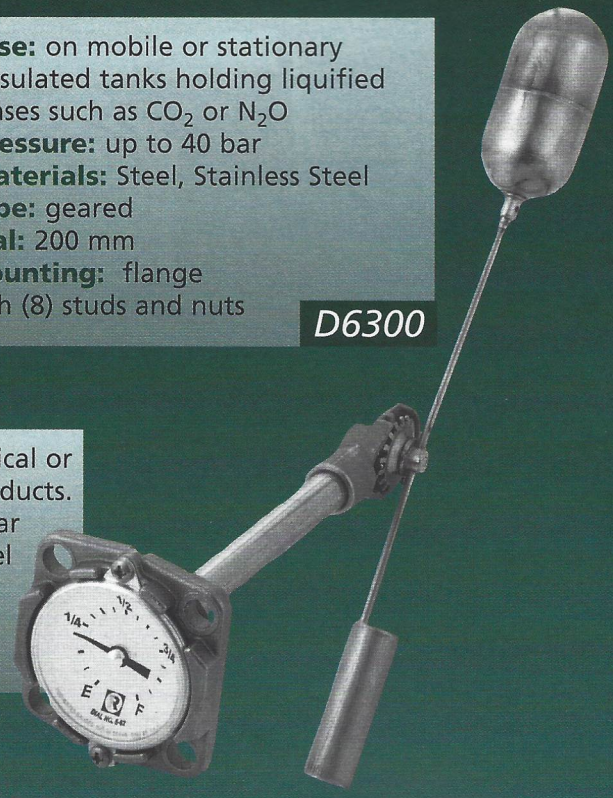
Use: on mobile or stationary insulated tanks holding liquified gases such as CO₂ or N₂O
Pressure: up to 40 bar
Materials: Steel, Stainless Steel
Type: geared
Dial: 200 mm
Mounting: flange with (8) studs and nuts

D6300



Use: on tanks or containers (IBC) for chemical or petrochemical products.
Pressure: up to 30 bar
Materials: Stainless Steel
Type: geared
Dial: 50 or 100 mm
Mounting: flange and (4) screws

6400

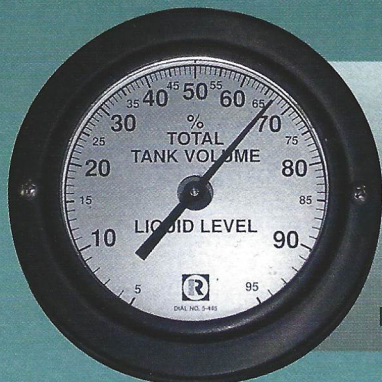
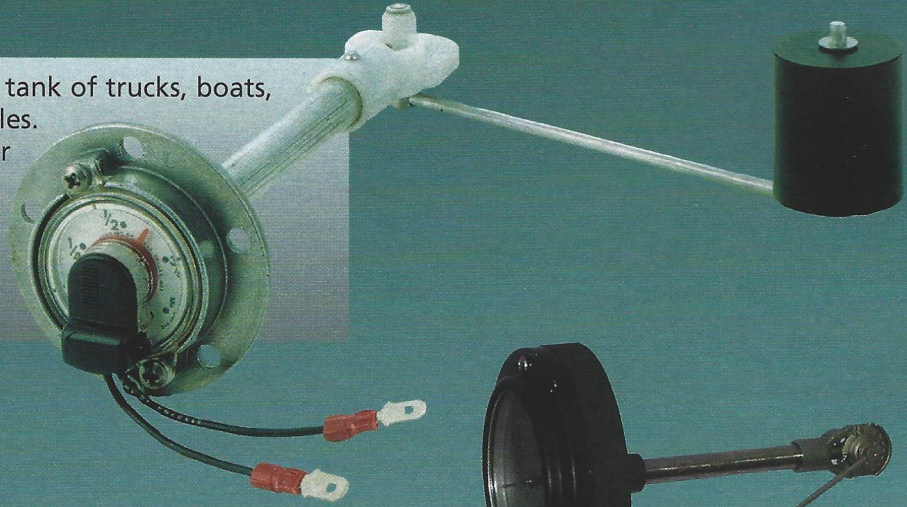


Use: diesel, gasoline, fuel, oil, heating oil in mobile or stationary, low pressure tanks and containers (IBC).
Pressure: up to 1,7 bar
Materials: Aluminium, Plastic, Nitrile rubber
Type: geared or lever
Dial: 40 or 50 mm
Mounting: flange and (4) screws

6500

Use: on gasoline, diesel or fuel tank of trucks, boats, generators, light vehicles.
Pressure: up to 0.7 bar
Materials: Aluminium, Plastic, Nitrile rubber
Type: geared for top mounting only
Dial: 40 mm
Mounting: standard SAE flange

6700



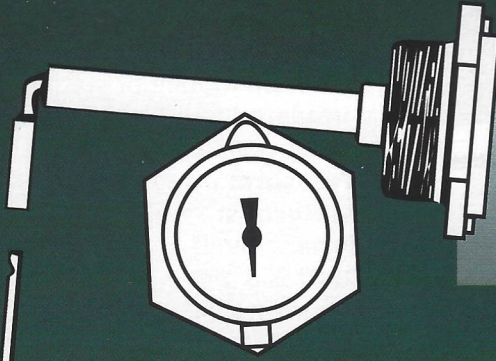
Use: On diesel tank of locomotive and railway vehicles.
Pressure: up to 3,4 bar
Materials: Aluminium, Stainless Steel, Nitrile rubber
Type: geared
Dial: 100 mm
Mounting: flange

HD6993





MAGNETIC FLOAT GAUGES

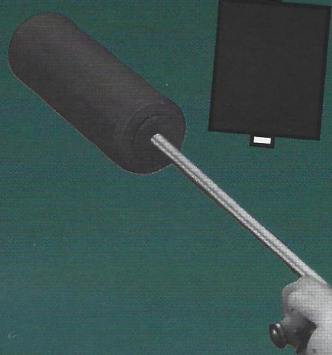


Use: fuels stored in flat end tanks
Pressure: up to 0,6 bar
Materials: Aluminium, Nitrile rubber
Type: lever
Dial: 40 or 50 mm
Mounting: 1-1/4" or 1-1/2" NPT

F7183/7283

B7200

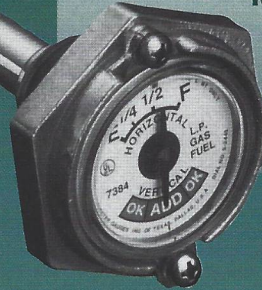
Use: LPG
Pressure: up to 25 bar
Materials: Brass, Aluminium, Plastic, Nitrile rubber
Type: geared
Dial: 40 mm
Mounting: 1-1/4" NPT



Use: LPG cylinders
Pressure: up to 25 bar

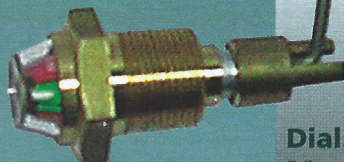
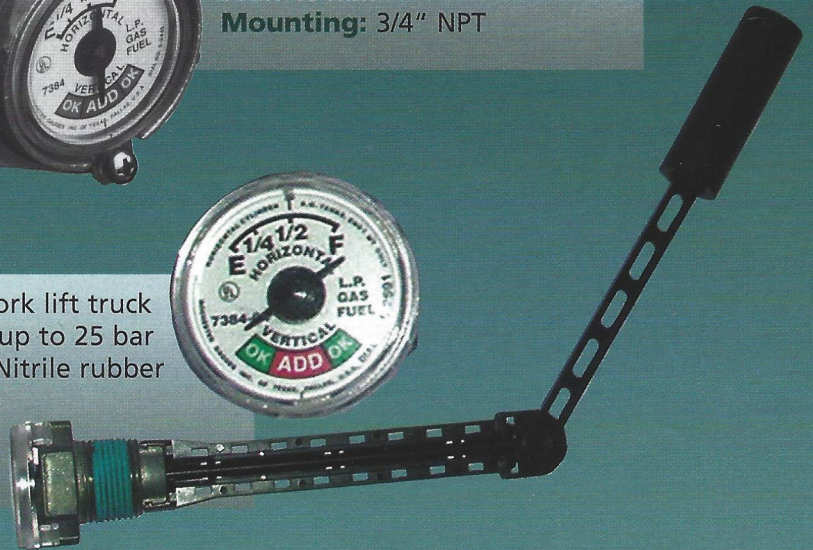
7300

Materials: Zinc, Aluminium, Plastic, Nitrile rubber
Type: geared
Dial: 40 mm
Mounting: 3/4" NPT



Use: LPG cylinders for fork lift truck
Pressure: up to 25 bar
Materials: Zinc, Plastic, Nitrile rubber
Type: geared
Dial: 40 mm
Mounting: 3/4" NPT

7384-04



Use: lubricating oil of compressors
Pressure: up to 25 bar
Materials: Brass, Aluminium
Type: lever
Dial: 20 mm conical for top and side view
Mounting: 3/4" BSPT

7483

MAGNETIC FLOAT GAUGES

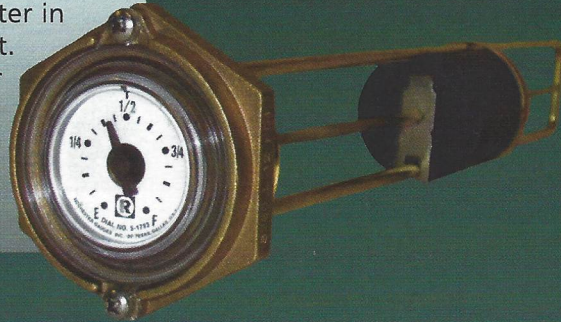


Use: in marine application for fuel, hydraulic oil, lubricating oil, water, sea water
Pressure: up to 13 bar
Materials: Stainless Steel
Type: geared
Dial: 100 mm
Mounting: flange

7600

Use: on narrow tank of oil, gasoline, fuel oil, water in marine environment.

Pressure: up to 1,7 bar
Materials: Brass, Stainless Steel
Type: spiral
Dial: 40 or 50 mm
Mounting: 1-1/2" NPT

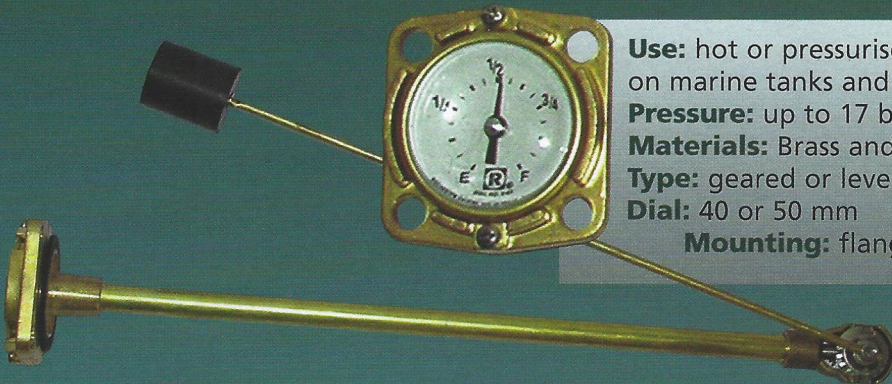


8200

Use: hot or pressurised water on dishwashers, boilers, radiators, on marine tanks and fire fighting equipments and vehicles.

Pressure: up to 17 bar
Materials: Brass and Stainless Steel
Type: geared or lever
Dial: 40 or 50 mm
Mounting: flange and (4) screws

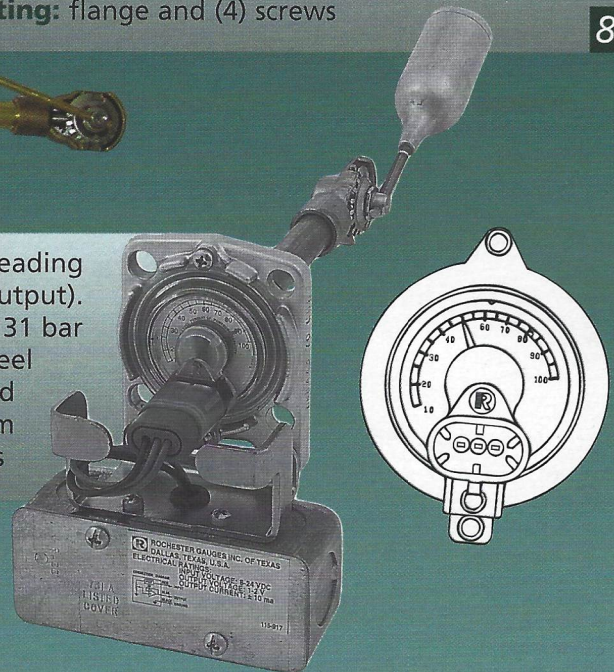
8400



Use: On refrigerant column, gauge with direct reading and electrical output (low level signal or voltage output).

Pressure: up to 31 bar
Materials: Brass, Aluminium, Stainless Steel
Type: geared
Dial: 40 mm
Mounting: flange and (4) screws

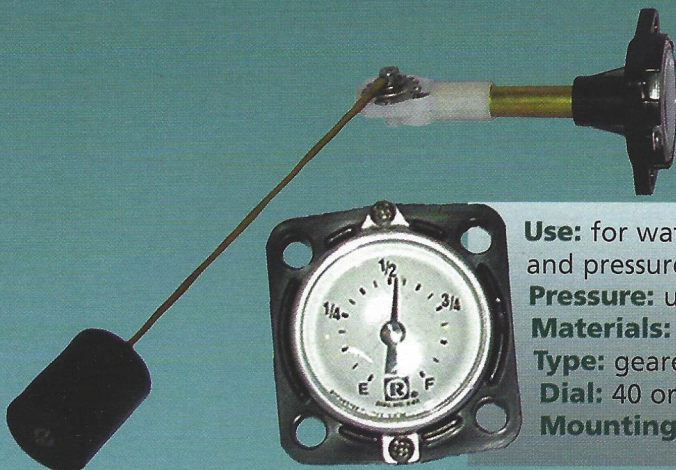
HM8443



Use: for water or mixture of water and glycol at ambient temperature and pressure on boats, caravans, de-icing equipments etc.

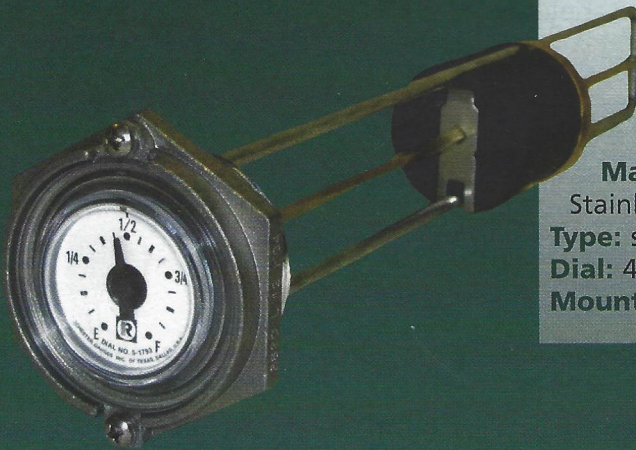
Pressure: up to 1,7 bar
Materials: Plastic, Brass, Stainless Steel, Nitrile rubber
Type: geared or lever
Dial: 40 or 50 mm
Mounting: flange and (4) screws

8500





MAGNETIC FLOAT GAUGES



Use: on narrow tank for oil, fuel, diesel oil, gasoline on stationary or mobile equipment such as compressors, generators, etc.

Pressure: up to 1,7 bar

Materials: Zinc, Brass, Steel, Stainless Steel

Type: spiral

Dial: 40 or 50 mm

Mounting: 1-1/2" NPT

8600

8700

Use: on water tanks at ambient temperature and pressure used on boats, caravans etc.

Pressure: up to 0,7 bar

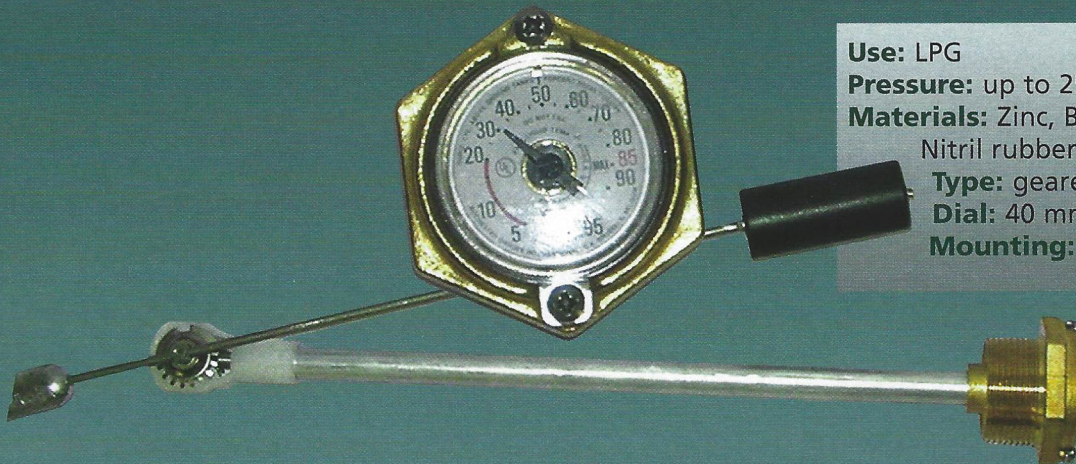
Materials: Plastic, Brass, Nitrile rubber

Type: geared for top mounting only.

Dial: 40 mm

Mounting: standard SAE flange

** can be supplied with loose float for field adjustment*



Use: LPG

Pressure: up to 25 bar

Materials: Zinc, Brass, Aluminium, Plastic, Nitril rubber

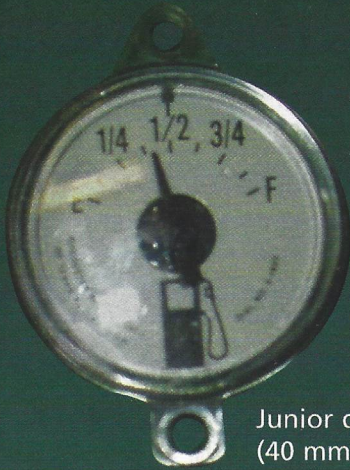
Type: geared

Dial: 40 mm

Mounting: 1" NPT

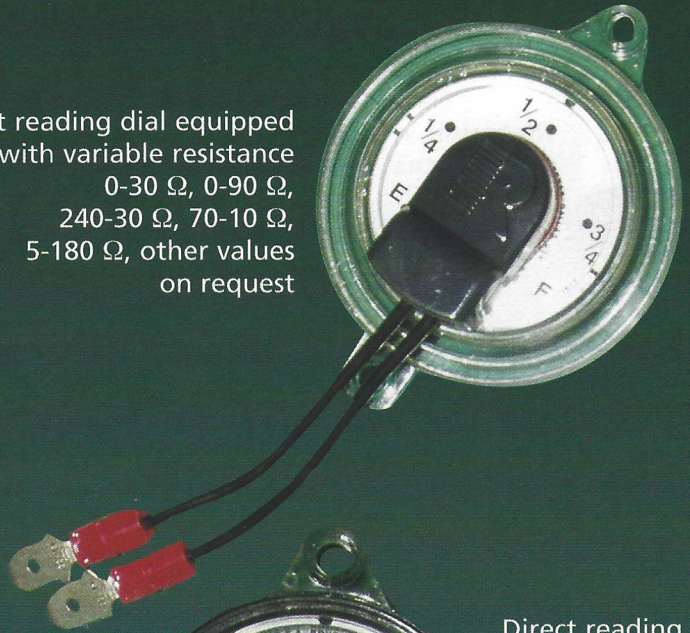
8900/B8900

DIALS AND SENSORS FOR MAGNETIC FLOAT GAUGES



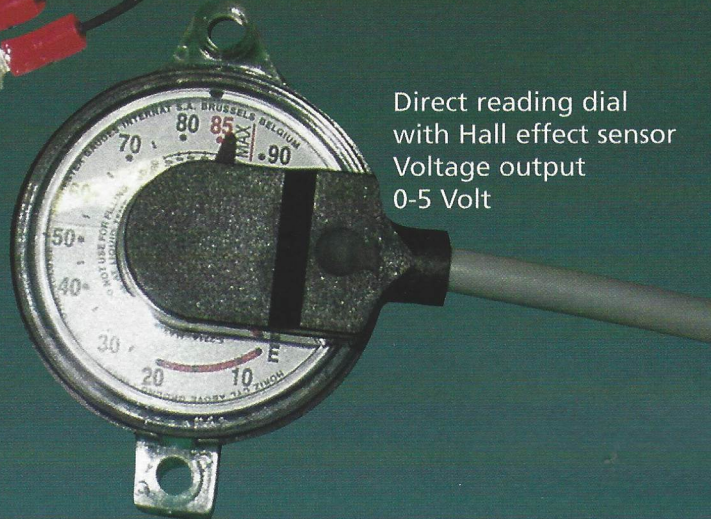
Junior dial
(40 mm)

Direct reading dial equipped
with variable resistance
0-30 Ω , 0-90 Ω ,
240-30 Ω , 70-10 Ω ,
5-180 Ω , other values
on request



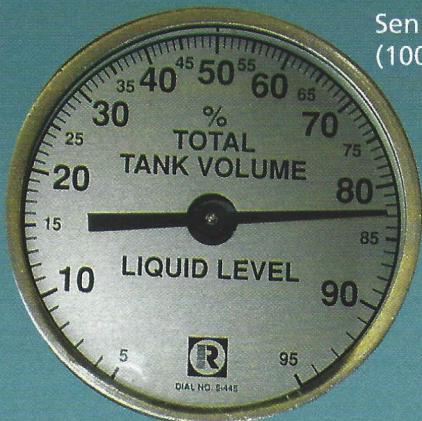
Senior dial
(50 mm)

Direct reading dial
with Hall effect sensor
Voltage output
0-5 Volt



Side
reading
dial

Explosion proof
sensors providing
level set points,
voltage output or
current output
4-20 mA

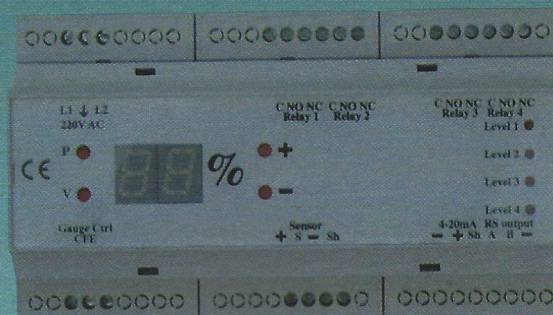


Senior 4" dial
(100 mm)

REMOTE INDICATOR



Remote indication
of the tank content,
(4) site adjustable
level set points,
optional output:
4-20 mA, RS 232,
RS 485, modem.



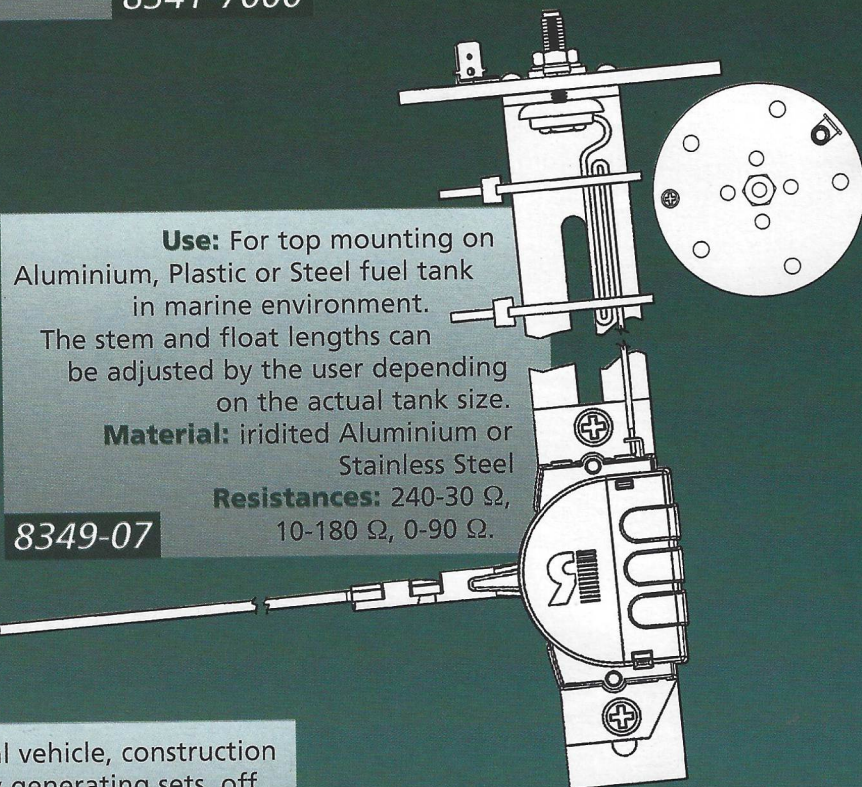


FUEL SENDERS



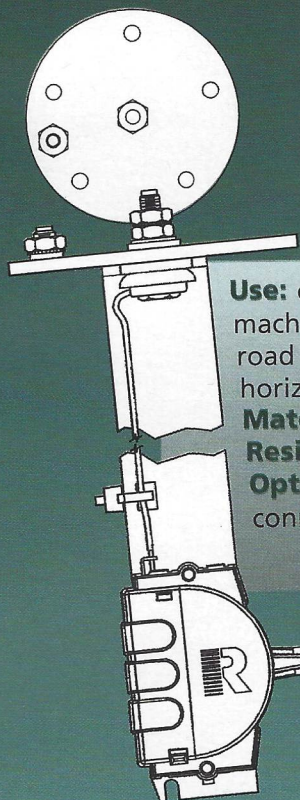
Use: For top mounting on Aluminium, Plastic or Steel fuel tank in marine environment
Material: iridited Aluminium or Stainless Steel
Resistances: 240-30 Ω
Options: float rod loose for field adjustment by user.

8341-7000



Use: For top mounting on Aluminium, Plastic or Steel fuel tank in marine environment. The stem and float lengths can be adjusted by the user depending on the actual tank size.
Material: iridited Aluminium or Stainless Steel
Resistances: 240-30 Ω , 10-180 Ω , 0-90 Ω .

8349-07



Use: on fuel tank of agricultural vehicle, construction machinery, mobile or stationary generating sets, off road vehicles, compressors etc. Available for vertical, horizontal or angular mounting.
Material: Aluminium or Stainless Steel.
Resistances: 240-30 Ω , 10-180 Ω , 0-90 Ω
Options: pass through cables with or without connectors, low level switch, specific ohm ranges.

8340-07-08



For specific applications, Rochester can supply fuel sensors with tubes in head, customised shape, dimensions, and resistive curve.

8340

Rochester Gauges Inc.

11616 Harry Hines Blvd

P.O. Box 29242

Dallas, Texas 75229

USA

Tel.: +1 972 2412161

Fax: +1 972 6201403

Web site: www.rochestergauges.com



**Medidores Internacionales Rochester
S.A. de C.V.**

Calle 26 A n° 6 Parque Industrial Vallejo

C.P. 54170 Tlalnepantla

Edo. de Mexico

Tel.: +52 55 30030971

Fax: +52 55 30030985

Web site: www.rochester-mexico.com

Rochester Gauges International S.A.

6, Avenue Lavoisier

B-1300 Wavre

Belgium

Tel.: +32 10 241010

Fax: +32 10 228139

Web site: www.rochester-gauges.be

